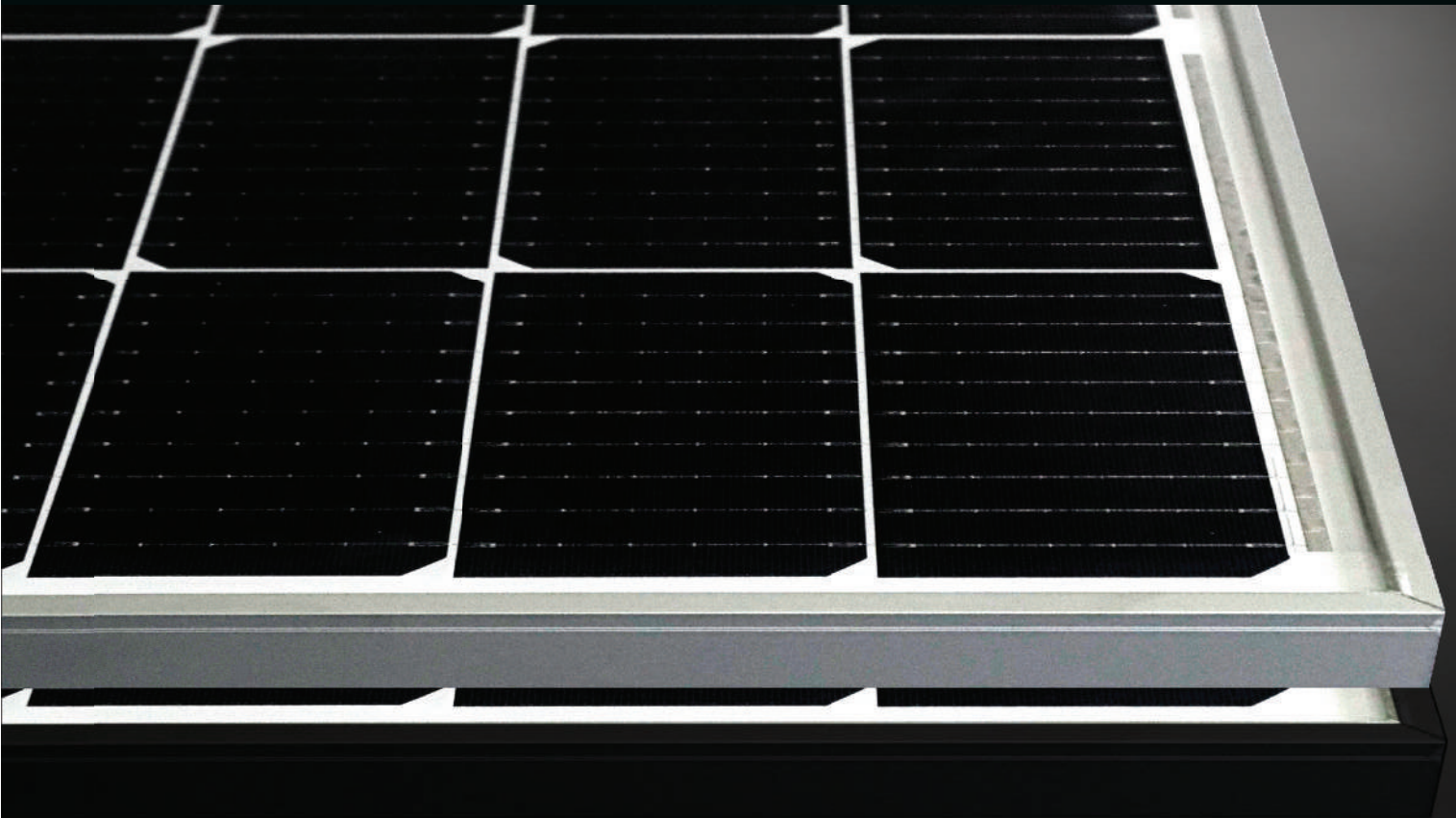




## AEG HIGH EFFICIENCY SERIES



### AS-M1208-H(M10)/HV/ HALF-CUT CELL TOPCON PHOTOVOLTAIC MODULE

#### CHARACTERISTICS



Power range: 475-485 Wp  
Half-cut cell technology, n-type cells (Topcon)  
Suitable for: residential / commercial installations

#### PRODUCT NAME CODE (PNC)



AS-M1208-H(M10)-475/480/485/HV  
(white backsheet, silver frame)  
AS-M1208Z-H(M10)-475/480/485/HV  
(white backsheet, black frame)

#### EXTRA PEACE OF MIND



Extensive certifications and rigorous Quality Control  
25 years product warranty  
30 years performance warranty

#### ADVANTAGES



Optimized design for more energy output  
Maximum power/efficiency  
thanks to n-type cells  
Premium look

## AS-M1208-H(M10)/HV/ HALF-CUT CELL TOPCON PHOTOVOLTAIC MODULE

### PRODUCT SERIES & NAMECODE (PNC)

AEG HIGH EFFICIENCY SERIES
AS-M1208-H(M10)-475/480/485/HV, silver frame
AS-M1208Z-H(M10)-475/480/485/HV, black frame

### ELECTRICAL CHARACTERISTICS AT STC<sup>1,2</sup>

Nominal Power (Pmax)	[Wp]	475	480	485
Power Sorting <sup>5</sup>	[W]	0-5	0-5	0-5
Maximum Power Voltage (Vmp)	[V]	36.2	36.4	36.6
Maximum Power Current (Imp)	[A]	13.12	13.19	13.25
Open Circuit Voltage (Voc)	[V]	42.6	42.8	43
Short Circuit Current (Isc)	[A]	13.96	14.02	14.08
Module Efficiency (ηm)	[%]	22.01	22.24	22.47
Maximum System Voltage	[V]	1500	1500	1500
Series Fuse Maximum Rating	[A]	25	25	25

### ELECTRICAL CHARACTERISTICS AT NOCT<sup>4</sup>

Maximum Power (Pmax)	[W]	357	361	365
Maximum Power Voltage (Vmp)	[V]	34.4	34.6	34.8
Maximum Power Current (Imp)	[A]	10.39	10.44	10.49
Open Circuit Voltage (Voc)	[V]	40.5	40.7	40.9
Short Circuit Current (Isc)	[A]	11.27	11.32	11.37

### MECHANICAL CHARACTERISTICS

Solar cells	monocrystalline [pcs]	120
	Dimensions [mm]	M10 Half-cut [182 x 91]
Front glass	high-transparency	
	Thickness [mm] / [in]	3.2 / 0.126
Backsheet	White plastic sheet	
Encapsulant	EVA	
Frame	Anodized aluminum alloy	Silver or black
Junction box	Split-type, IP68	
	Bypass diodes	3
UV-resistant cables	Length [mm] / [in]	1200 / 47.24
	Section [mm <sup>2</sup> ]	4
Connectors	MC4 Compatible	
Dimensions	H x L x W [mm]	1903 x 1134 x 30
	H x L x W [in]	74.92 x 44.65 x 1.18
Weight	[kg] / [lbs]	22 / 48.49
Maximum load	Wind / Snow [Pa]	2400 / 5400
Fire Class	Class A	

### PACKAGING

Packing configuration	[pcs/pallet]	36
Loading capacity	[pcs/40 ft container]	864

### NOTES

1-Standard Test Conditions (STC): Irradiance 1000 W/m<sup>2</sup>, Air Mass AM = 1.5, Cell Temperature 25°C)

2-Measurement tolerances (IEC 61215:2016): Pmax±3%, Voc±3%, Isc±3%

3-AEG photovoltaic modules are classified according to a principle of positive power tolerance: the Power Output measured at STC of the delivered modules exceeds their assigned Nameplate Nominal Power

4-NOCT: Nominal operating cell temperature, Irradiance 800 W/m<sup>2</sup>, Wind Speed 1m/s; Ambient Temperature 20°C, Air Mass AM=1.5

5-Full text of the Warranty Terms available at: [www.aeg-solar.com](http://www.aeg-solar.com). If not offered by your distributor, the standard warranty conditions apply.

6-(HE/GB) No less than 99% of the minimum "Peak Power at STC" in the first year; power output decline no more than 0.4% per year thereafter, ending with 87.4%.

Dimensions in the technical picture are expressed in mm with tolerance ±2 mm (+0.079 "-) / Version 2023.09.V1 © Solar Solutions Group. Specifications in this datasheet are subject to change without notice.

AEG is a registered trademark used under license from AB Electrolux (publ).

### CERTIFICATIONS

System	ISO 9001, ISO 14001, ISO 45001
Product	IEC 61215, IEC 61730

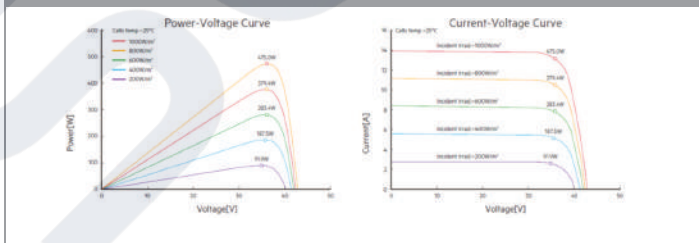
### WARRANTIES

Product warranty <sup>5</sup>	[years]	25
Performance warranty (linear) <sup>6</sup>	[years]	30

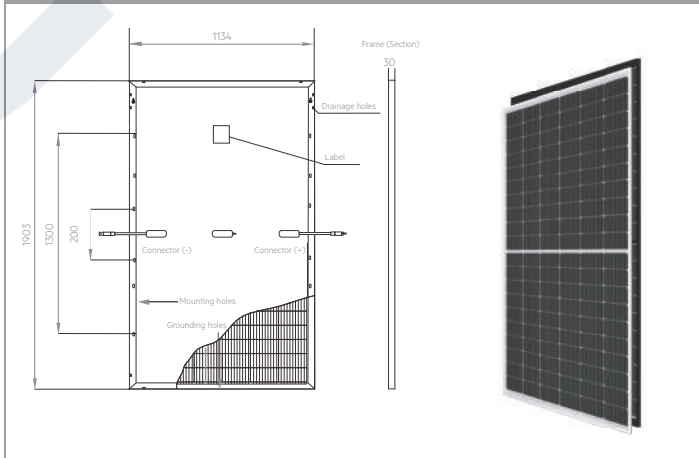
### TEMPERATURE CHARACTERISTICS

NOCT	[°C]	45 (±2)
Pmax Temp. Coefficient (γ)	[%/°C]	-0.30
Voc Temp. Coefficient (β)	[%/°C]	-0.25
Isc Temp.Coefficient (α)	[%/°C]	0.046
Operating temperature	[°C]	-40~+85

### I/V CURVES - IRRADIANCES



### TECHNICAL DRAWINGS



### CONTACT US

SOLSOL s.r.o.  
Králova 298/4, Brno, 616 00,  
Czech Republic  
[sales@solsol.cz](mailto:sales@solsol.cz)  
[www.solsol.cz](http://www.solsol.cz)

# SOLSOL

[info@aeg-solar.com](mailto:info@aeg-solar.com)

[www.aeg-solar.com](http://www.aeg-solar.com)

AEG is a registered trademark used under license from AB Electrolux (publ).