



## CLOUD CONNECT ADVANCED (CCA) Data Logger and Rapid Shutdown Controller

The Cloud Connect Advanced (CCA) is a compact, powerful data logger and the communication hub of the Tigo smart platform. It powers the monitoring and safety capabilities of Tigo smart modules.

### CONNECTIVITY

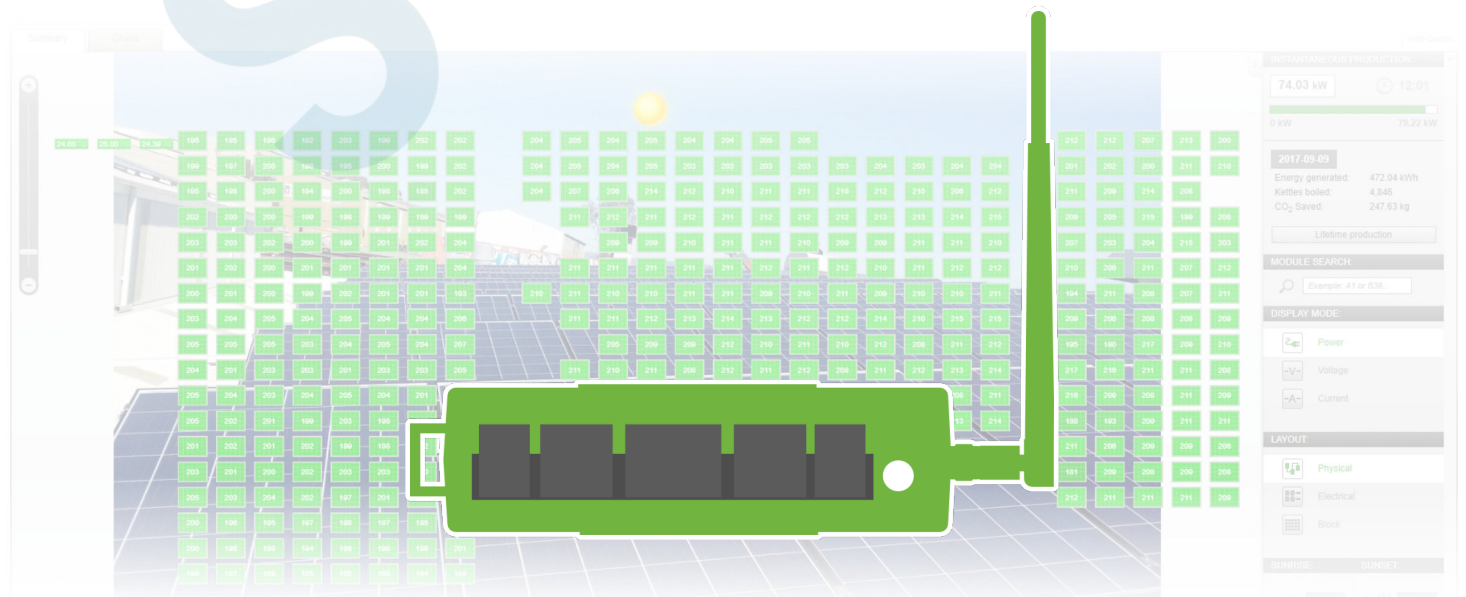
View module-level monitoring data through the Tigo cloud and quickly commission new installations with built-in wireless communication and the Tigo SMART app for Android and iOS.

### SAFETY

Control module-level deactivation for Tigo systems to comply with NEC 2014 and 2017 690.12 Rapid Shutdown requirements.

### FLEXIBILITY

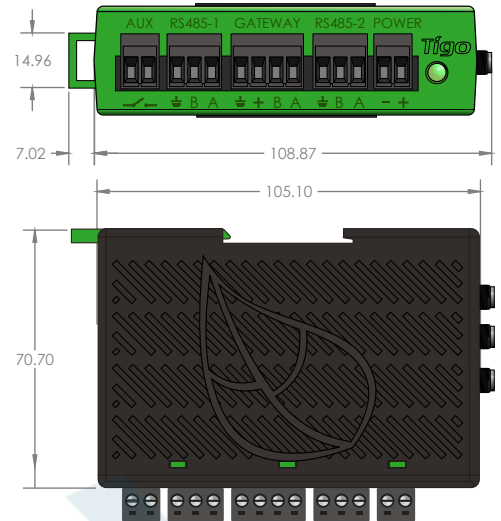
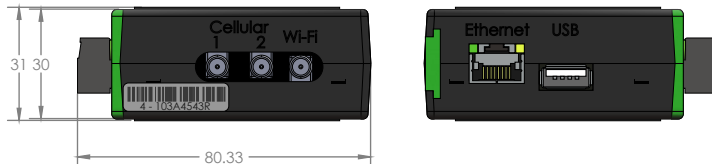
Read data from a wide range of 3rd party devices, including Modbus-equipped inverters, charge controllers, weather stations, and revenue grade meters.



# CLOUD CONNECT ADVANCED (CCA)

## COMPACT DATA LOGGER

- Collect data from up to 900 TS4 units
- Supports wired and wireless networks
- Control monitoring and safety features
- Configure and commission with Tigo SMART app
- Monitor 3rd party devices via Modbus



All dimensions in mm

### Electrical

#### CCA

Input Voltage: 10V<sub>DC</sub> - 25V<sub>DC</sub>

Power Consumption: 3W - 7W

#### Power Supply

Input Voltage: 100V<sub>AC</sub> - 240V<sub>AC</sub>

### Capacity

Each CCA supports up to 900 TS4 units and up to 7 TAPs

Each TAP supports up to 300 TS4 units up to 115ft (35m) away

### Mechanical Specifications

DIN rail mountable enclosure

Dimensions (CCA only): 31mm x 115.51mm x 71.54mm

Weight (CCA only): 126g

Operating Temperature Range: -20°C to +70°C (-4°F to +158°F)

Cooling: Natural Convection

### User Interface

[Mobile App: Tigo SMART App for Android and iOS](#)

[Multi-function LED status indicator](#)

## ORDERING OPTIONS

Item #	Description
346-00000-00	CCA, Standalone



SOLSOL s.r.o.  
Králova 298/4 | Brno 616 00 | Česká republika  
tel: +420 774419119 | e-mail: novak@solsol.cz  
www.solsol.cz



### For sales info:

[sales@tigoenergy.com](mailto:sales@tigoenergy.com) or 1.408.402.0802

### For product info:

Visit [tigoenergy.com/products](http://tigoenergy.com/products)

### For technical info:

Visit [support.tigoenergy.com](http://support.tigoenergy.com)

For additional info and product selection assistance, use Tigo's online design tool at [tigoenergy.com/design](http://tigoenergy.com/design)

