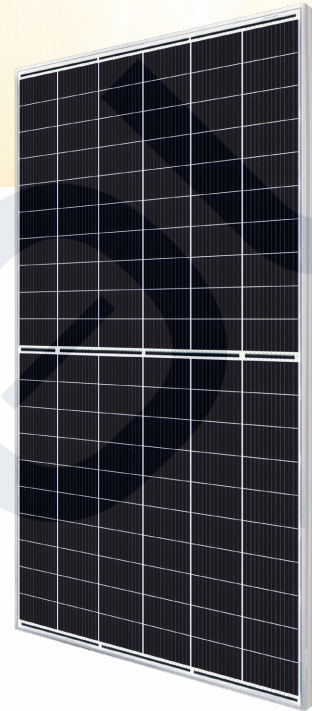




# HiKu7 Mono

580 W ~ 600 W

CS7L-580 | 585 | 590 | 595 | 600MS



## MORE POWER

- Module power up to 600 W  
Module efficiency up to 21.2 %
- Up to 3.5 % lower LCOE  
Up to 5.7 % lower system cost
- Comprehensive LID / LeTID mitigation technology, up to 50% lower degradation
- Compatible with mainstream trackers, cost effective product for utility power plant
- Better shading tolerance

## MORE RELIABLE

- 40 °C lower hot spot temperature, greatly reduce module failure rate
- Minimizes micro-crack impacts
- Heavy snow load up to 5400 Pa, wind load up to 2400 Pa\*

**12 Years** Enhanced Product Warranty on Materials and Workmanship\*

**25 Years** Linear Power Performance Warranty\*

**1<sup>st</sup> year power degradation no more than 2%  
Subsequent annual power degradation no more than 0.55%**

\*According to the applicable Canadian Solar Limited Warranty Statement.

### MANAGEMENT SYSTEM CERTIFICATES\*

ISO 9001:2015 / Quality management system  
ISO 14001:2015 / Standards for environmental management system  
OHSAS 18001:2007 / International standards for occupational health & safety

### PRODUCT CERTIFICATES\*

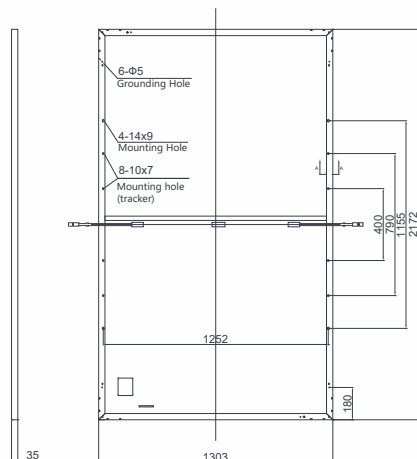
\* As there are different certification requirements in different markets, please contact your local Canadian Solar sales representative for the specific certificates applicable to the products in the region in which the products are to be used.

**CANADIAN SOLAR INC.** is committed to providing high quality solar products, solar system solutions and services to customers around the world. Canadian Solar was recognized as the No. 1 module supplier for quality and performance/price ratio in the IHS Module Customer Insight Survey, and is a leading PV project developer and manufacturer of solar modules, with over 46 GW deployed around the world since 2001.

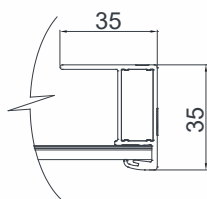
\* For detailed information, please refer to the Installation Manual.

## ENGINEERING DRAWING (mm)

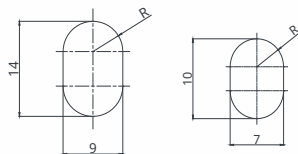
### Rear View



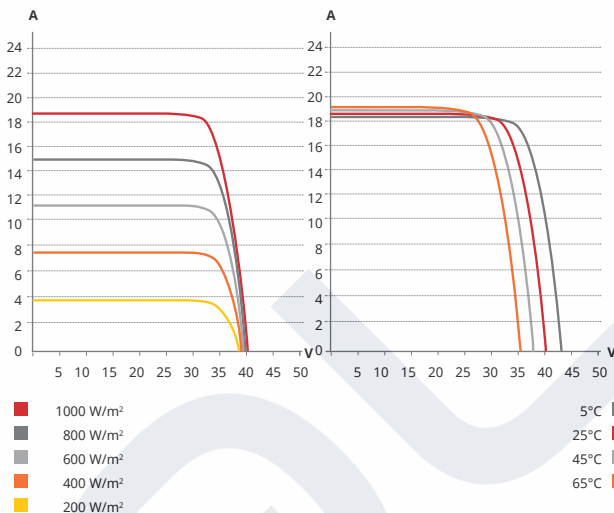
### Frame Cross Section A-A



### Mounting Hole



## CS7L-590MS / I-V CURVES



## ELECTRICAL DATA | STC\*

CS7L	580MS	585MS	590MS	595MS	600MS
Nominal Max. Power (Pmax)	580 W	585 W	590 W	595 W	600 W
Opt. Operating Voltage (Vmp)	34.1 V	34.3 V	34.5 V	34.7 V	34.9 V
Opt. Operating Current (Imp)	17.02 A	17.06 A	17.11 A	17.15 A	17.20 A
Open Circuit Voltage (Voc)	40.5 V	40.7 V	40.9 V	41.1 V	41.3 V
Short Circuit Current (Isc)	18.27 A	18.32 A	18.37 A	18.42 A	18.47 A
Module Efficiency	20.5%	20.7%	20.8%	21.0%	21.2%
Operating Temperature	-40°C ~ +85°C				
Max. System Voltage	1500V (IEC) or 1000V (IEC)				
Module Fire Performance	CLASS C (IEC 61730)				
Max. Series Fuse Rating	30 A				
Application Classification	Class A				
Power Tolerance	0 ~ + 10 W				

\* Under Standard Test Conditions (STC) of irradiance of 1000 W/m<sup>2</sup>, spectrum AM 1.5 and cell temperature of 25°C.

## ELECTRICAL DATA | NMOT\*

CS7L	580MS	585MS	590MS	595MS	600MS
Nominal Max. Power (Pmax)	433 W	437 W	441 W	445 W	448 W
Opt. Operating Voltage (Vmp)	31.9 V	32.0 V	32.2 V	32.4 V	32.6 V
Opt. Operating Current (Imp)	13.60 A	13.66 A	13.70 A	13.74 A	13.76 A
Open Circuit Voltage (Voc)	38.2 V	38.4 V	38.6 V	38.7 V	38.9 V
Short Circuit Current (Isc)	14.74 A	14.77 A	14.82 A	14.87 A	14.90 A

\* Under Nominal Module Operating Temperature (NMOT), irradiance of 800 W/m<sup>2</sup>-spectrum AM 1.5, ambient temperature 20°C, wind speed 1 m/s.

## MECHANICAL DATA

Specification	Data
Cell Type	Mono-crystalline
Cell Arrangement	120 [2 x (10 x 6) ]
Dimensions	2172 x 1303 x 35 mm (85.5 x 51.3 x 1.38 in)
Weight	32.5 kg (71.6 lbs)
Front Cover	3.2 mm tempered glass
Frame	Anodized aluminium alloy, crossbar enhanced
J-Box	IP68, 3 bypass diodes
Cable	4 mm <sup>2</sup> (IEC)
Connector	T4 series or H4 UTX or MC4-EVO2
Cable Length (Including Connector)	460 mm (18.1 in) (+) / 340 mm (13.4 in) (-) or customized length*
Per Pallet	30 pieces
Per Container (40' HQ)	480 pieces

\* For detailed information, please contact your local Canadian Solar sales and technical representatives.

## TEMPERATURE CHARACTERISTICS

Specification	Data
Temperature Coefficient (Pmax)	-0.34 % / °C
Temperature Coefficient (Voc)	-0.26 % / °C
Temperature Coefficient (Isc)	0.05 % / °C
Nominal Module Operating Temperature	42 ± 3°C

## PARTNER SECTION

# SOLSOL

SOLSOL s.r.o.  
Králova 298/4, Brno, 616 00, Czech Republic  
sales@solsol.cz, www.solsol.cz

\* The specifications and key features contained in this datasheet may deviate slightly from our actual products due to the on-going innovation and product enhancement. Canadian Solar Inc. reserves the right to make necessary adjustment to the information described herein at any time without further notice.

Please be kindly advised that PV modules should be handled and installed by qualified people who have professional skills and please carefully read the safety and installation instructions before using our PV modules.

## CANADIAN SOLAR INC.

545 Speedvale Avenue West, Guelph, Ontario N1K 1E6, Canada, www.csisolar.com, support@csisolar.com